



Term 3, Week 1, 2023

UPCOMING DATES TO REMEMBER

Week 2	3 Way Interviews
Week 2	Monday to Friday 31 st July to 4 th August JP Swimming Week R-2
Week 3	Friday 11 th August SAPSASA Athletics
Week 4	Wednesday 16 th August MALPA Graduation
Week 4	Wednesday 16 th August Community Assembly 2:25pm in the Gym
Week 5	Book Week Performance Tuesday 22 nd August and Parade Wednesday 23 rd August
Week 5	Friday 25 th August SAPSASA Girls Football/ Boys Soccer
Week 6	Thursday 31 st August Father's Day Stall
Week 6	Friday 1 st September PUPIL FREE DAY
Week 7	4 th – 7 th September School Dental Visit
Week 8	Wednesday 13 th September Community Assembly 2:20pm in the Gym
Week 8	Festival of Music Choir Festival Theatre
Week 8	Friday 15 th September Year 6 students visiting Playford International College 9am to 10:50am
Week 10	Tuesday 26 th September Nunga Café
Week 10	Friday 29 th September Assembly 1:30pm Early Dismissal 2:05pm

PRINCIPAL'S REPORT



Dear Parents and Caregivers,

Welcome back to Term 3! I hope your families enjoyed the school holiday break. It is a busy term with many extra activities happening so please keep an eye on newsletters and notes home so you don't miss anything.

Parent Teacher Interviews

We will begin running these interviews next week. We are aiming for 100% contact with families so please book in for a chat with your child's teacher if you haven't already. Specialist teachers are also available for a chat.

Parent Survey

From Tuesday 1st of August, all parents and carers will be invited by email or SMS to participate in the annual parent survey. The survey closes midnight Sunday 27th of August. Your feedback will support our school and the department to improve so thank you for participating.

NAPLAN Results for Years 3 and 5

NAPLAN results for years 3 and 5 students have been sent out to families. If you didn't get a report please let us know. NAPLAN tests are only one aspect of each school's assessment and reporting process. As they are held once every 2 years for each student, they cannot replace the extensive, ongoing assessments made by teachers about student performance. Your child's teacher will have the best insight into your child's educational progress and this can be discussed during parent/teacher interviews.

Community Calendar

While changes may still be made, please see the latest calendar of events scheduled over the remainder of the year. This has been inserted into the newsletter for you.

Showcase Concert

Please save the date (Wednesday 27th September) for our annual Showcase Concert! I can reveal that our theme for the year will be "Movies". Classes have started to plan out their dance performances. It is an exciting event on our annual calendar.

Book Week

Last year our book week celebrations were so amazing that we are going to run the parade again this year! Book week is in week 5. The school will attend a performance at school on the Tuesday and we will run our parade on the Wednesday morning at 10:30am in the gym.

Whole School Community Fun Day

Rather than going out for a whole school excursion, we are planning a fun community event that will be held at school during the last week of term 4. This will include a colour fun run and a range of different, exciting experiences for the students and their families. More information will come out later in the year but please save the date of Tuesday 12th December in your calendars!

Kind Regards,
Julie Brown, School Principal



SOMETHING FROM INTERVENTION

– READING AT HOME WITH CHILDREN –

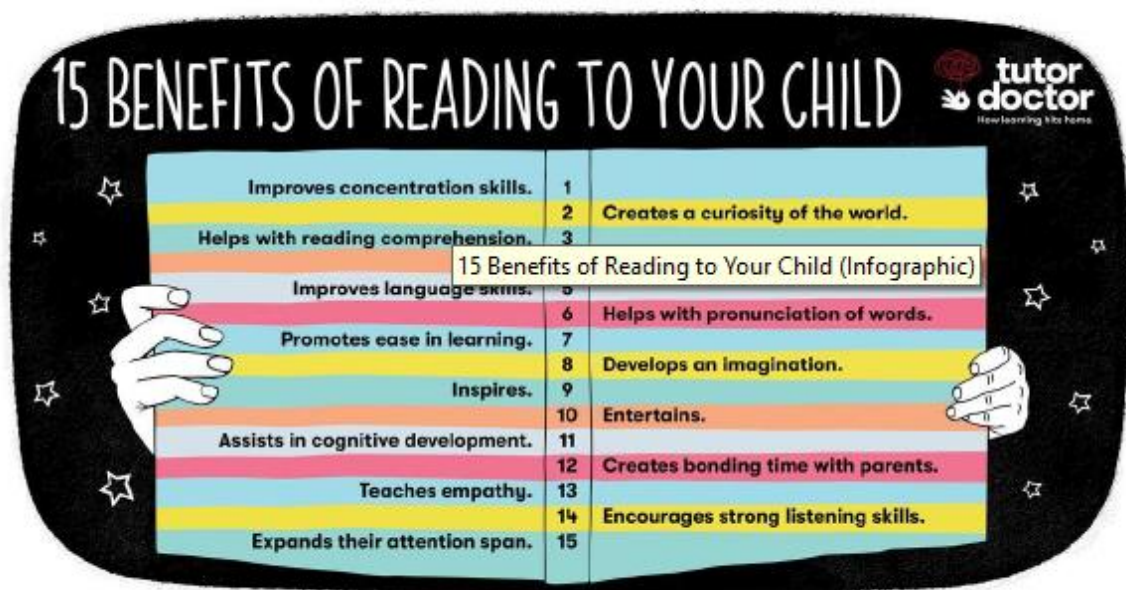
Reading with your child at home has been shown to have significant impact on a child's ability to develop their oral language and language comprehension skills.

'Children who are read to at least three times per week at home are almost twice as likely to score in the top 25% in reading compared to those who are read to less than three times.'

Let's keep reading at home and sharing the love of books.

Breanna Cummins

Intervention Teacher





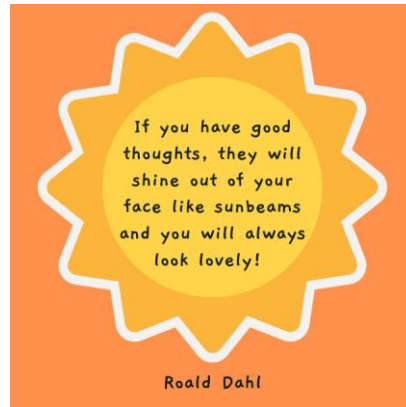
Each year the NAIDOC committee selects a theme to celebrate NAIDOC week 2nd July-8th July and this year's theme was "For our elders" .

Unfortunately, "Uncle Collin" a local elder was unable to come out and share some of his knowledge, but we celebrated the week with a variety of experiences which help to increase our knowledge of Aboriginal culture, history and traditions. The activities included making damper on the coals and eating them with local Quondong jam. We decorated biscuits into the Aboriginal flag and each class had a session in the library for a walk-through which was set up with Aboriginal artefact's, instruments, animals, seeds and a variety of interesting Aboriginal resources. To finish off, we had a local Aboriginal artist "Amy Rogerson" from Maali Yorga Arts, teaching us some Aboriginal symbols, talking about her designs and then students painted our own mural canvas.



Hats

A reminder that school hats are now a required part of the school uniform all year round. If your child does not have a hat they will be asked to spend outside play in the shelter shed, nature play or library.
If you need to purchase a new hat, please see the front office.



OSHC

Elizabeth Grove OSHC operates on site from 6.30 – 8.30am and 3.05 - 6pm each school day. Fees payable by each family will vary based on income and Child Care Subsidy received. Full fees are \$20.00 for before school care and \$30.00 for after school care. Breakfast and a healthy afternoon snack are included in the fees.
Sandy Pengeley OSHC Director on 82556872 or the **School front office** for an enrolment form.

Breakfast Club



Every school day our site hosts breakfast club. Mrs Rigney, along with guests from Kickstart for Kids and social work students, welcome students from 8am until 8:45am in the library kitchen. Students can choose to have toast or cereal for breakfast before they start their learning for the day. No booking needed, simply come along.

Types of Dog

N	R	S	C	F	F	I	T	S	A	M	O	T	H
H	N	I	O	C	B	U	L	L	D	O	G	T	E
S	R	N	L	H	R	W	E	E	L	G	A	E	B
N	E	A	L	I	P	E	B	G	D	T	I	D	I
U	L	I	I	H	E	A	I	O	O	L	R	R	O
H	I	T	E	U	D	C	E	R	X	P	I	E	M
C	E	A	U	A	P	N	O	O	R	E	D	H	E
O	W	M	D	H	S	I	U	R	E	E	R	P	T
D	T	L	A	U	E	O	N	H	G	D	T	E	C
I	T	A	B	A	T	N	I	S	S	I	A	H	R
L	O	D	B	S	T	C	A	H	C	H	E	S	U
M	R	P	O	I	E	C	T	G	L	H	C	G	L
D	H	O	S	R	R	R	E	E	N	N	E	A	D
P	B	X	U	S	T	H	O	U	N	D	L	R	D

BULLDOG
PINSCHER
DALMATIAN
MASTIFF
BOXER
SHEPHERD
BEAGLE
TERRIER
SETTER
CORGI
ROTTWEILER
CHIHUAHUA
COLLIE
HOUND
DACHSHUND

Play this puzzle online at : <https://thefreeonline.com/puzzles/9/>